



BoviFlex® Cattle minerals

MOSEGÅRDEN A/S

BoviFlex® Cattle minerals

Future minerals for cattle

Mosegårdens BoviFlex® is not like other "traditional" cattle minerals on the Danish market

The raw materials used are always of high quality

- By using a special ground magnesium oxide, a much higher availability can be achieved than what can be achieved with many other types of magnesium
- The magnesium oxide used in **BoviFlex®** has a very easily soluble quality, which is normally only used in the production of premixes for milk replacers, where sedimentation in the milk must be prevented the best way
- A fine particle size minimizes the segregation in both small bags and big bags where a large proportion of "coarse" and uneven particles can result in segregation especially in big bags
- Due to the reduced risk of segregation, **BoviFlex®** is more suitable for delivery in big bags than granulated mineral blends
- The adhesion to other feed in the complete feed or to feed on the feeding table is improved when using fine particles compared to using granulates and pellets which more easily "sprinkles" through the feed
- The synthetic Vitamin E used in **BoviFlex®** is overall spray-dried (SD) to ensure the best possible durability and stability. Vitamin E SD is significantly more expensive than the normal Vitamin E adsorbate used by other suppliers on the Danish market





BoviFlex® with organic selenium

Positive experience with organic selenium

Mosegården has lots of positive experience with the use of organic selenium. **BoviFlex® with organic selenium** is a good solution to obtain more vigorous calves. As additional advantage, we can mention a reduction in the number of retained placenta

It is our belief and experience that by combining organic selenium and sodium selenite, the optimum selenium supply for cattle is achieved.

BoviFlex® with organic selenium

- Provides 20 - 80% higher level of selenium in the blood serum of the newborn calf, compared to calves born by mothers who have eaten blends with inorganic selenium
- Raises the selenium content in meat and milk significantly, which by comparison is not possible with inorganic selenium
- Can double the selenium content in the colostrum compared to inorganic selenium
- Raises the selenium level in the blood 20% more effectively than inorganic selenium

Organic selenium is bound to the amino acids Methionine and Cysteine and the selenium ends where the conversion of these amino acids takes place





BoviFlex® is customized the current feed plan of the herd

BoviFlex® is based on the need and conditions of the individual herd:

- Stable System
- Performance Level
- Feeding with raw materials
- Feeding with by-products
- Stocking rate and infection risks
- Ecology

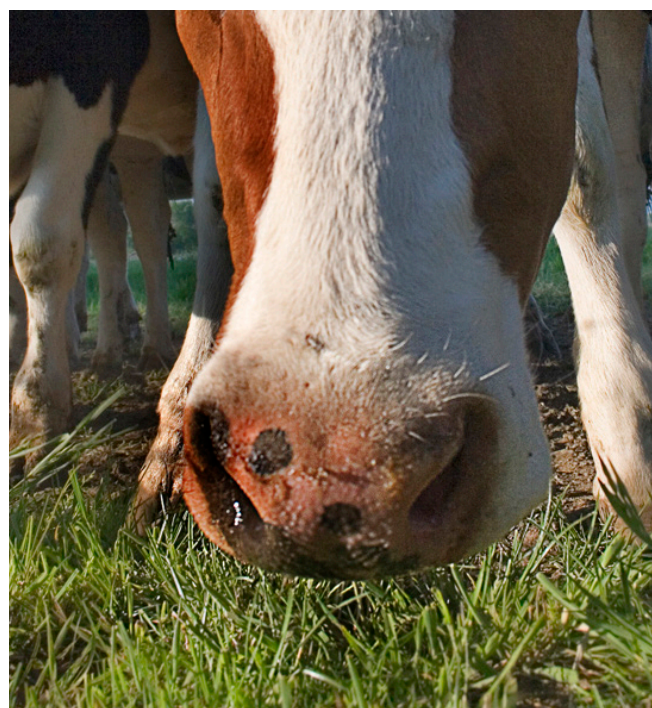
It is possible to consider and take individual needs into account by for instance adding extra macro- and micro-nutrients:

- Natural vitamin E
- IntelliBond® manganese, zinc, copper
- Organic micro-minerals such as selenium, zinc, copper, manganese
- Biotin, niacin and other B vitamins
- Yeast cultures like Levucell and AntiSaf
- Sulphur

We also have a wide range of "standard" blends:

- Summer blends
- Winter blends
- Dry blends with or without natural vitamin E, organic selenium, biotin and IntelliBond® manganese, zinc and copper
- Breeding blends
- Blends for use in organic production

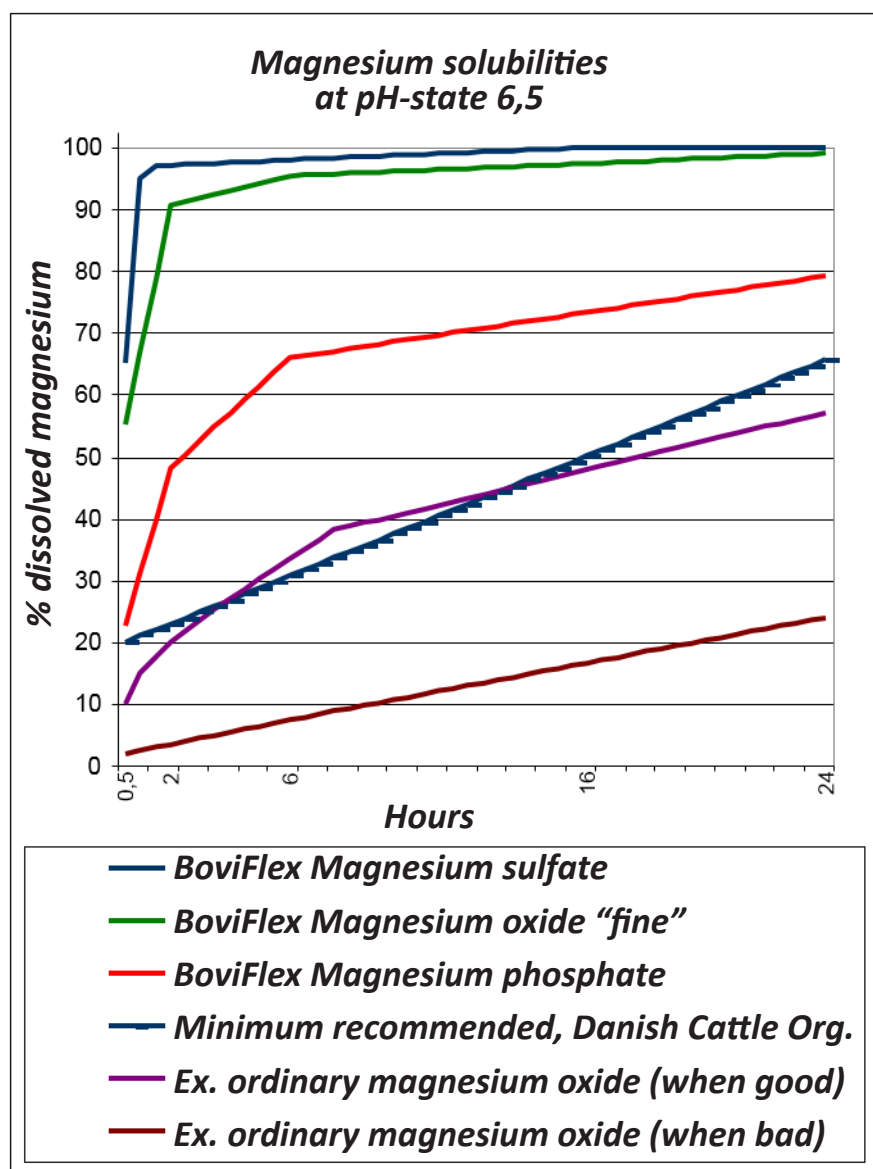
Standard blends are typically used when the feed is changed or when the farmer cannot use a whole pallet at once for example when ordering dry blends





BoviFlex® Quality

- Mineral availability is brought into focus. To obtain the right quality is more important than getting the absolute lowest price per kilo
- Apart from a finely ground magnesium oxide, also water-soluble magnesium sulphate and magnesium phosphate are used



“DANSK KVÆG”, the Danish Cattle organisation recommends using a magnesium source with a solubility better than 50% during 16 hours

The solubility is significantly higher in BoviFlex®



Result of finely ground raw materials

- The density of the product gets higher
- If necessary when used in automatic feeders, the "anti-slip" can be regulated so that the product is more suitable for transport by auger
- The finer structure can result in a more dusty product. The dust can be removed with oil, however, if minerals are added in complete feed, it is normally not necessary to pay the extra oil costs
- If a more granulated product is requested, magnesium phosphate with less dust and a relatively good solubility of "pH-state" can be used
- Mosegården always advise against using an ordinary magnesium oxide as magnesium source. If a blend containing plain magnesium oxide is demanded, it will never be sold under the name **BoviFlex®**





In general

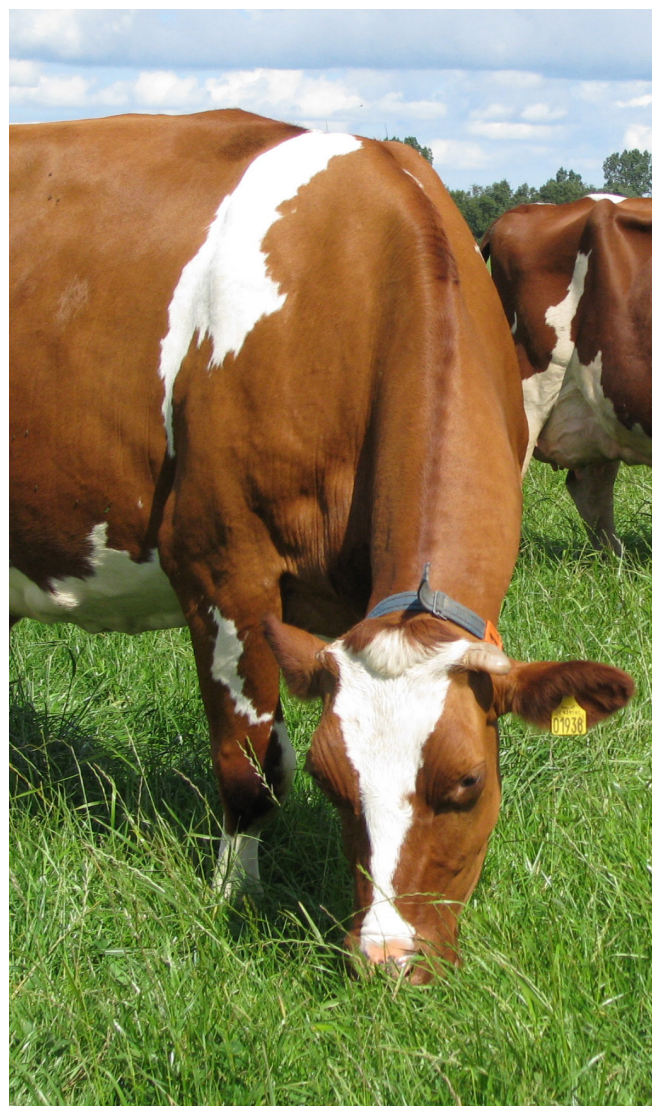
- **BoviFlex®** can be delivered in optional bag sizes between 17 and 34 kg. If the daily consumption is 28 kg, we can deliver in 28 kg bags
- The big bags can be delivered in optional sizes from 250 to 1,000 kg. If less than 1,000 kg per big bag is needed, we will normally deliver at least 2 big bags at the same time to avoid surcharges.
- As "dust binder" we only use oil - because oil does not add water contrary to molasses
- **BoviFlex®** is almost completely free from residual water, thus ensuring the best vitamin durability. When wheat middlings are used as carrier, it is likewise an extra dried quality

Ordering

To ensure a suitable route planning, please place your custom-made order 14 days before delivery

Stocked items can be delivered within a week

When a new custom blend is needed, extra time for review of feed ration and optimisation must be anticipated



Contact Mosegården

Phone: +45 9786 1966

Fax: +45 9786 1446

post@mosegarden.dk

Erling Mikkelsen

Product Consultant, cattle

+45 2217 2040

em@mosegarden.dk

Lars Frøkjær

Product Consultant, cattle

+45 2068 1966

lf@mosegarden.dk

11.07.19